



## cathedral

responsible for all elements. blender(modeling), maya 2012 (shading, lighting), photoshop(texturing), and nuke(compositing)



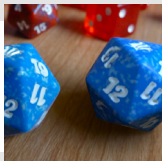
## dinner's ready

responsible for all elements. maya 2012(modeling, shading, lighting), photoshop(texturing), and nuke(compositing)



## balloon capsule

responsible for all elements. blender



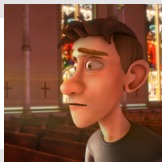
## d20

responsible for all elements. blender(modeling), maya 2012 (shading, lighting), photoshop(texturing), and nuke(compositing)



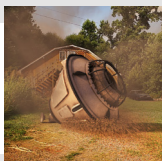
## legacy

responsible for lighting. maya 2012(lighting) and nuke(compositing)



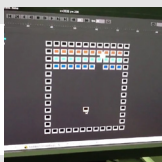
## cased

responsible for all elements except character textures. maya 2012(modeling, shading, lighting, animation), photoshop(texturing), and nuke(compositing)



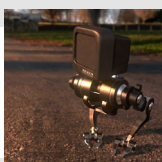
## capsule crash wip

responsible for all elements. blender(modeling, texturing, tracking, simulating, lighting, compositing), after effects(compositing dust)



## brick breaker

responsible for all elements. python in nuke



## beep boop bop

responsible for all elements. blender(modeling, animating, shading, lighting, compositing), and after effects(editing)